

**AV004** 4 Cell Lithium Iron Phosphate Experimental Battery with balance charging port

Dimensions (Metric): 61MM (L) x 61MM (W) x 112MM (H)  
 Dimensions (Standard): 2.5" (L) x 2.5" (W) x 4.25" (H)  
 Negative Terminal Location: Right  
 Weight: 444 grams (.979 lb)  
 Voltage (Charged): 13.6V  
 Amperage: 8 A/H at 10 A/H rating  
 Pulse Cranking Amps: 135 CCA  
 Operating Environment: -18°C (0°F) to 60°C (140°F)

**Applications for up to 100 amp starter draw**

- Small single cylinder two or four stroke engines under 200cc
- Back up power source for avionics or lights
- Great Scooter battery for airport vehicle.
- Will start up to 600cc four stroke with 4 cylinders.



**AV008** 8 Cell Lithium Iron Phosphate Experimental Battery with balance charging port

Dimensions (Metric): 114MM (L) x 61MM (W) x 112MM (H)  
 Dimensions (Standard): 4.5" (L) x 2.5" (W) x 4.25" (H)  
 Negative Terminal Location: Right  
 Weight: 768 grams (1.7 lb)  
 Voltage (Charged): 13.6V  
 Lead Acid Equivalent Amperage: 15 A/H @ 10 A/H Rating  
 Pulse Cranking Amps: 275 CCA  
 Operating Environment: -18°C (0°F) to 60°C (140°F)

**Applications for 100 amp to 200 amp starter draw**

- Rotax twin cylinder two strokes up to 600cc
- Hirth twin cylinder two strokes up to the 3503 70HP Series
- HKS-700E series two cylinder four stroke engines



**AV012** 12 Cell Lithium Iron Phosphate Experimental Battery with balance charging port

Dimensions (Metric): 114mm (L) x 87mm (W) x 112m (H)  
 Dimensions (Standard): 4.5" (L) x 3.5" (W) x 4.25" (H)  
 12 Cell EVO2 Negative Terminal Location: Right  
 12 Cell EVO2 L Negative Terminal Location: Left  
 Weight: 1106 grams (2.44 lbs.)  
 Voltage (Charged): 13.6V  
 Lead Acid Equivalent Amperage: 20 A/H @ 10 A/H Rating  
 Pulse Cranking Amps: 410 amps  
 Operating Environment: -18°C (0°F) to 60°C (140°F)

**Applications for 200 amp to 300 amp draw**

- Jabiru 2200 and 3200 series engines
- Rotax 912 and 914 series engines
- Lycoming Low Compression 4 cylinders
- Continental Low Compression 4 cylinders

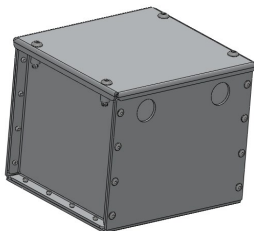


**AV016** 16 Cell Lithium Iron Phosphate Experimental Battery with balance charge port

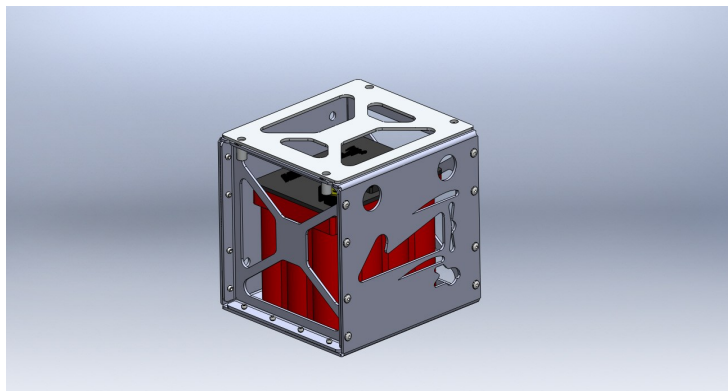
Dimensions (Metric): 114mm (L) x 114mm (W) x 112mm (H)  
 Dimensions (Standard): 4.5" (L) x 4.5" (W) x 4.25" (H)  
 Negative Terminal Location: Left  
 Weight: 1611 grams (3.5 lbs.)  
 Voltage (Charged): 13.6V  
 Amperage: 9.2Amp/Hour  
 Lead Acid Equivalent Amperage: 28 A/H @ 10 A/H Rating  
 Pulse Cranking Amps: 500 amps  
 Operating Environment: -18°C (0°F) to 60°C (140°F)

- Applications for 300 amp to 500 amp draw**
- Jabiru 2200 and 3200 series engines
  - Rotax 912 and 914 series engines
  - VW and Corvair Engines
  - Lycoming IO 360 200 HP series
  - Lycoming OI 540 engines
  - Continental 470 and 550 series engines

**AVVAULT** Aerovoltz Battery Vault holds up to the AV016 battery. Mounts on the bottom or back. All holes predrilled comes assembled



**AVVAULTLW** Aerovoltz Light Weight Battery Box. Fits up to AV016 battery. Comes assembled and drilled.



**AVCHARG** 110V Lithium Battery Balance Charger

**AVCHARG240** 220-240V Balance Charger

Chargers are pre-programmed and ready for use. Will also charge other forms of batteries from various forms of Lithium, NiCad, PB, and more.

Supplied with power supply, balance charging cable, and terminal leads with clips.

